

# Prevent AMD Vision Loss with Digital Healthcare

Refer your patients to a specialized  
remote monitoring provider

More than 20,000 patients served



  
NOTAL VISION  
MONITORING  
CENTER



- ✓ FDA Cleared
- ✓ Medicare Covered
- ✓ No Cost to Practice

# Closing the Loop Between Doctor and Patient Between Office Visits

The ForeseeHome AMD Monitoring Program is a comprehensive remote monitoring service for intermediate age-related macular degeneration (AMD) patients. The service monitors patients between office visits, when it's difficult to detect the acute onset of late-stage disease that requires timely treatment.



Ordering ForeseeHome and referring your patients is easy.

There is no cost to the practice for the service and we manage everything for you and your patient once a referral is sent.

  
NOTAL VISION  
MONITORING CENTER



PHYSICIAN  
REFERRAL TO  
MONITORING  
CENTER



BENEFIT VERIFICATION



PATIENT ENGAGEMENT



DEVICE PROVISIONING



DEVICE TRAINING



COMPLIANCE MONITORING



ALERT NOTIFICATION



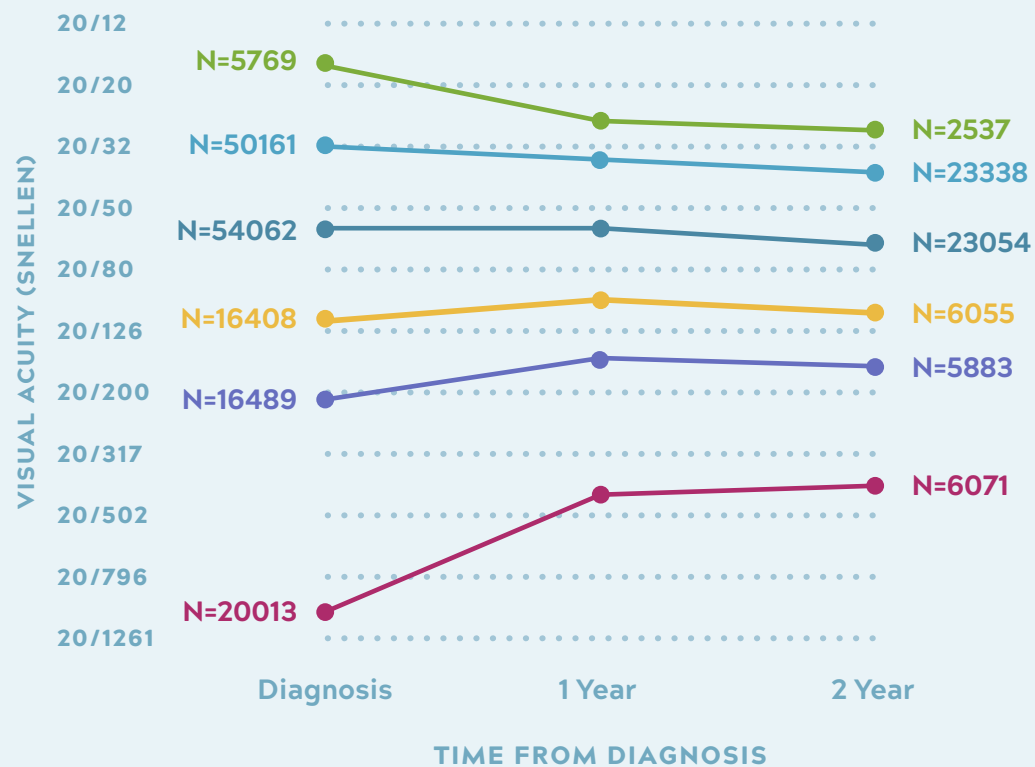
PATIENT  
ENCOUNTER  
WITH  
PHYSICIAN

# Real-World Data Supports Clinical Trial Results:

Early diagnosis with good VA is essential to preserve functional vision with anti-VEGF therapy

## American Academy of Ophthalmology IRIS® Registry Real World Data<sup>1</sup> January 2013 - June 2017

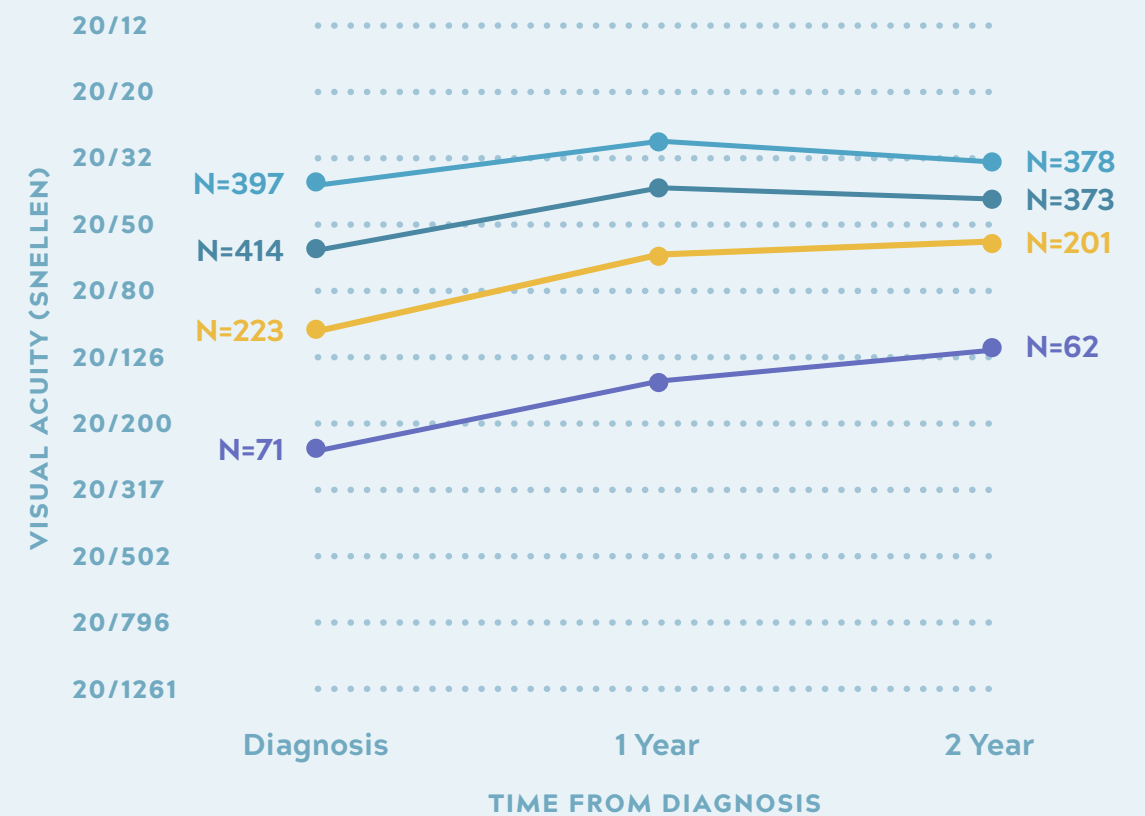
Mean VA at 1 year & 2 year post-diagnosis by group baseline VA



162,902 eyes diagnosed with wet AMD (153,141 patients)

## Comparison of Age-Related Macular Degeneration Treatment Trial (CATT)<sup>2</sup>

Mean VA at 1 year and 2 year



1,185 eyes diagnosed with wet AMD

### Baseline VA Group

- 82 Letters (>20/25)
- 82-68 Letters (20/25-20/40)
- 67-53 Letters (20/50-20/80)
- 52-38 Letters (20/100-20/160)
- 37-23 Letters (20/200-20/320)
- <23 Letters (<20/320)

Long-term anti-VEGF study data shows that visual acuity gains in first two years are not sustained<sup>3</sup>

# Time to Improve AMD Standard of Care to Preserve Functional Vision

Early diagnosis with good visual acuity (VA) is essential to preserve functional vision with anti-VEGF therapy, but the majority of patients are diagnosed with a mean VA of 20/83 according to IRIS<sup>®</sup> Registry real world data.<sup>1</sup>

Only one third of eyes are diagnosed at 20/40 or better.<sup>1</sup>

**Percent of Patients with  
≥20/40 Baseline VA<sup>1</sup>**

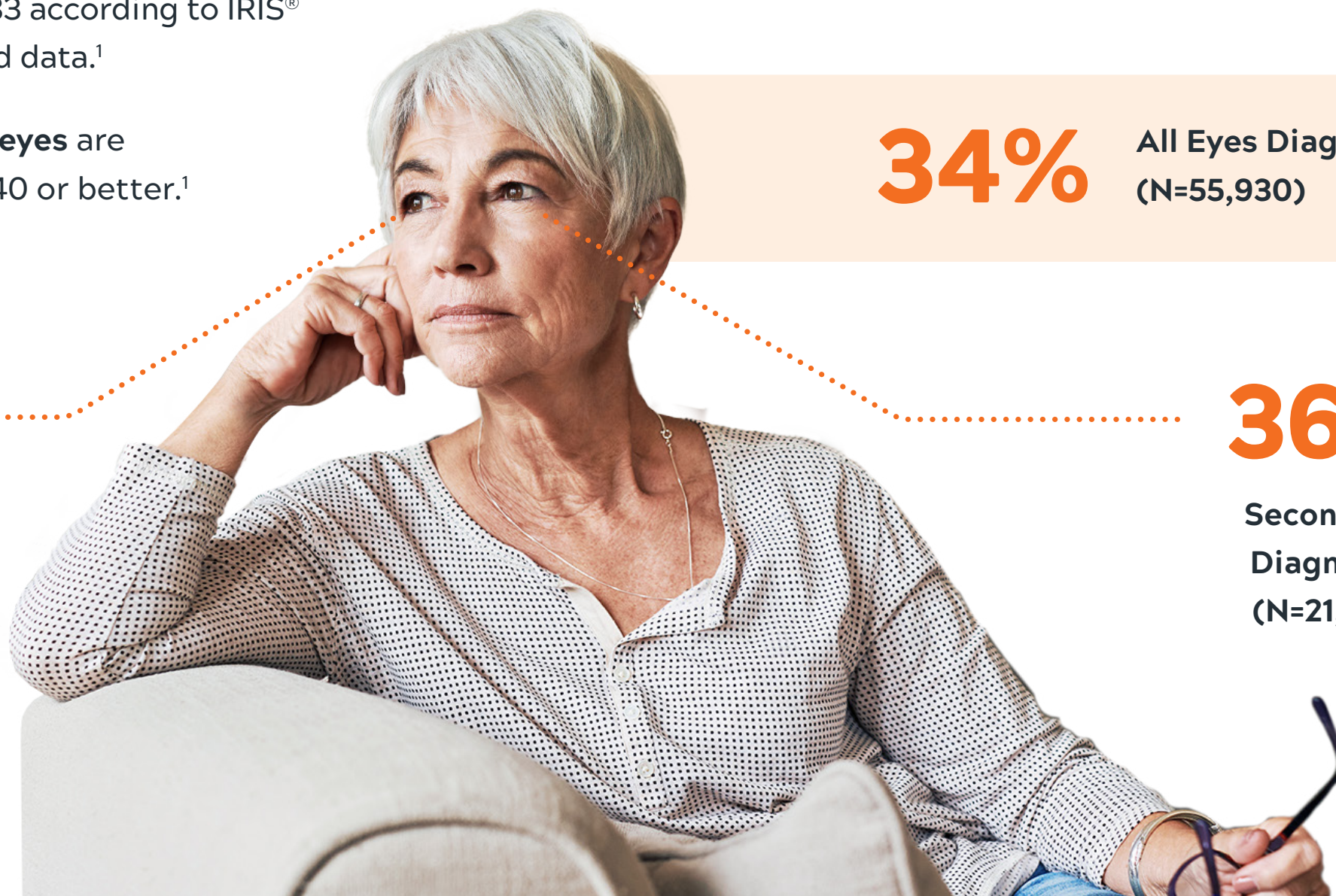
**34%** All Eyes Diagnosed  
(N=55,930)

**33%**

First Eye  
Diagnosed  
(N=34,092)

**36%**

Second Eye  
Diagnosed  
(N=21,838)



# ForeseeHome Helps Physicians Detect Wet AMD Earlier

ForeseeHome, in addition to standard of care, is proven to help physicians diagnose neovascular AMD earlier, with better visual acuity<sup>4</sup> and smaller lesion sizes<sup>5</sup>, compared to standard of care alone.<sup>1</sup>

## VISUAL ACUITY

Real-world data analysis of patients who maintained functional vision (>20/40) at diagnosis<sup>1,4</sup>

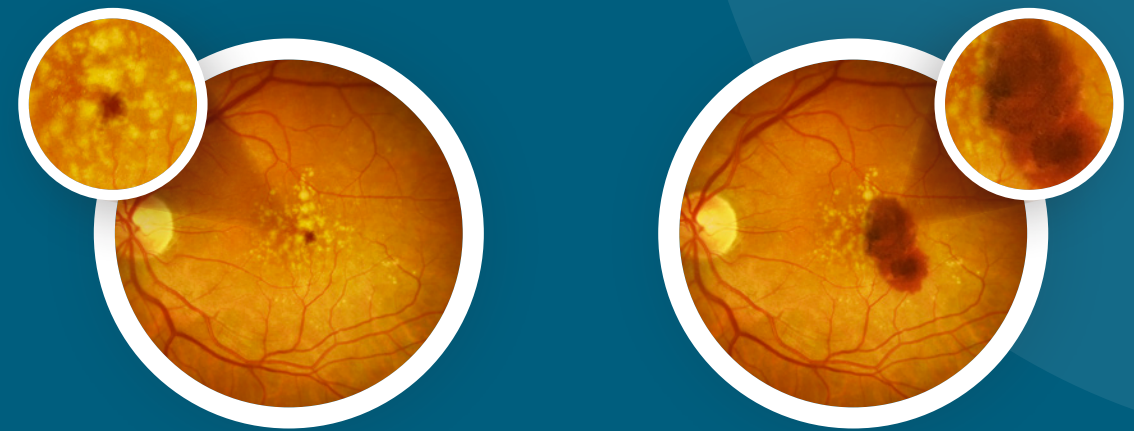
**81%** vs **34%**

**ForeseeHome<sup>4</sup>**

when added to regular eye exams and self-reporting changes in vision

**Standard of Care Alone<sup>1</sup>**

with regular eye exams and self-reporting changes in vision



FORESEEHOME<sup>5</sup>

VS

STANDARD OF CARE<sup>6</sup>

**0.23**

Disk Area

**4.2**

Disk Area

## LESION SIZE

**Lesions were approximately 3 times smaller at diagnosis with ForeseeHome<sup>5</sup> versus standard care alone<sup>6</sup>**

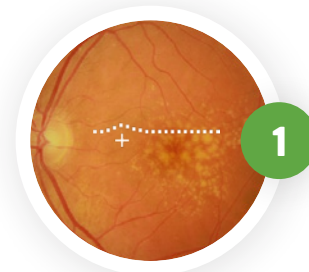
Patient ForeseeHome test compliance in the real world is excellent, largely because of the patient engagement the Notal Vision Monitoring Center provides.\*

\* Patients test  $5.6 \pm 3.2$  times per week<sup>4</sup>

# The ForeseeHome Test

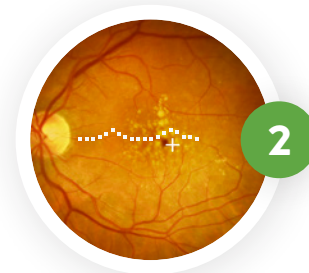
## Preferential Hyperacuity Perimetry

A psychophysical test used to identify and quantify visual abnormalities, such as metamorphopsia and scotoma.

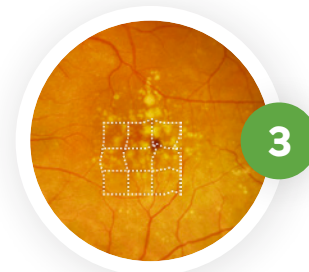


1 A dotted line with a bump representing artificial distortion appears and disappears. Patient uses mouse to click where they saw the bump. The macula is tested with 500 data points 3 to 5 times each.

Visual field - central 14° (4200 microns)



2 When the elevation caused by pathology is larger than the artificial distortion, the patient preferentially picks this spot of true distortion.

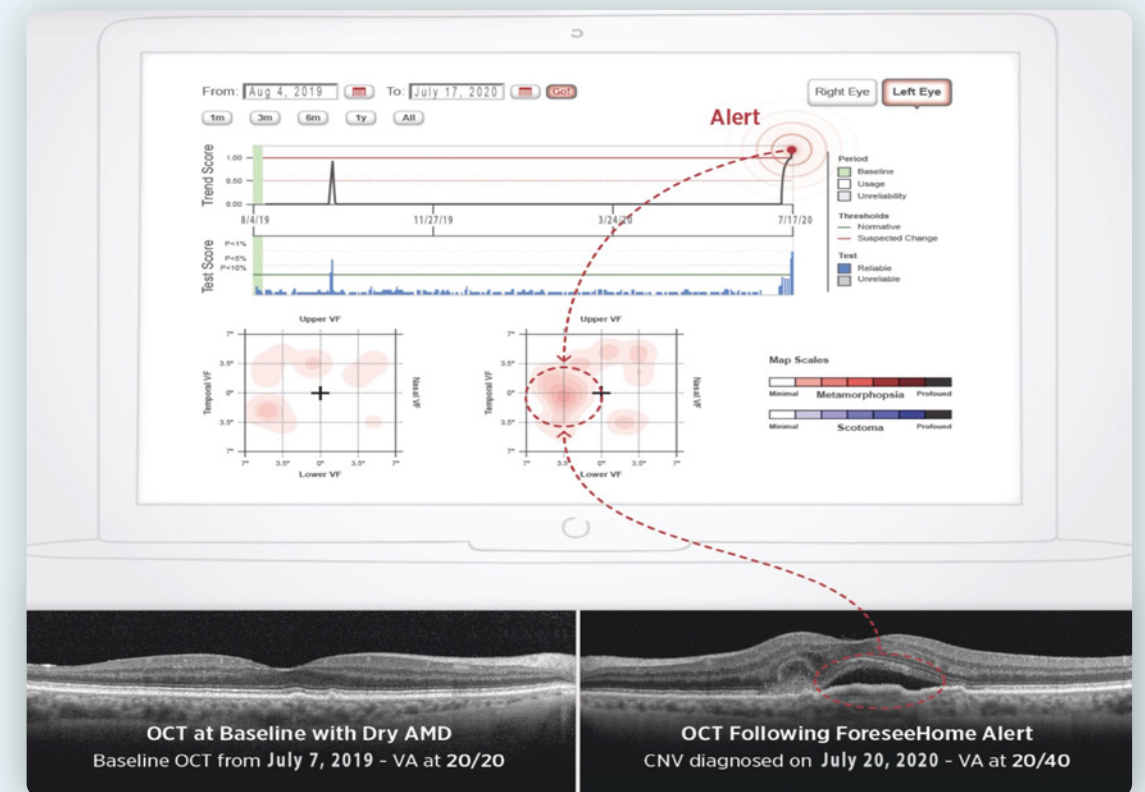


3 Once pathology is suspected, the algorithm will bracket the area to localize and quantify pathology.

## ForeseeHome Patient Test Report Supports In-Office Findings

Clinically actionable insights from the Eye Care Professional Portal can help inform your patient care.

Testing data from the ForeseeHome device is automatically transmitted to the Notal Vision Monitoring Center and populated on a secure, HIPAA compliant portal.



A statistically significant change in patient testing generates an alert, which is reviewed by in-house ophthalmologists and sent to the physician's office. This alert allows the physician to determine the best course of action for their patient.



Learn more about Preferential Hyperacuity Perimetry

# Low Out-of-Pocket Costs for Medicare Patients

Patients with Medicare Part B and a secondary supplement plan **may have out-of-pocket costs as low as \$0 per month.**

Patients with Medicare Part B and no secondary supplement plan owe around \$15 per month once their yearly Medicare Fee-for-Service Part B deductible is met.\*

\*Does not apply to patients enrolled in Medicare Advantage Plans.



**\$0**  
PER MONTH\*  
Depending on patient coverage

**~\$15**  
PER MONTH\*  
For patients without supplemental insurance

## Get started with ForeseeHome

Offering the ForeseeHome AMD Monitoring Program to your patients is easy:



Sign up with your account manager or visit:  
[www.ForeseeHome.com/doctor](http://www.ForeseeHome.com/doctor)



Identify patients who have:

- > Intermediate dry AMD diagnosis
- > BCVA of 20/60 or better



Refer your patients



Learn more about coverage

## FDA INDICATION FOR USE

The ForeseeHome is intended for use in the detection and characterization of central and paracentral metamorphopsia (visual distortion) in patients with age-related macular degeneration, as an aid in monitoring progression of disease factors causing metamorphopsia including but not limited to choroidal neovascularization (CNV). It is intended to be used at home for patients with stable fixation.

The ForeseeHome AMD Monitoring Program is only available by physician order and is intended to be used as an addition to regular eye exams.

The ForeseeHome AMD Monitoring Program is covered by Medicare, subject to its coverage requirements for the test, to assess patients with dry AMD who are at risk of developing wet AMD.

## REFERENCES

1. Ho AC, Kleinman DM, Lum FC, et al. Baseline Visual Acuity at Wet AMD Diagnosis Predicts Long-Term Vision Outcomes: An Analysis of the IRIS Registry. *Ophthalmic Surg Lasers Imaging Retina*. 2020;51:633-639.
2. Ying GS, et al. Association of Baseline Characteristics and Early Vision Response with 2-Year Vision Outcomes in the Comparison of AMD Treatments Trials (CATT), *Ophthalmology*. 2015;122(12):2523-2531.
3. Comparison of Age-related Macular Degeneration Treatments Trials (CATT) Research Group, Maguire MG, Martin DF, et al. Five-Year Outcomes with Anti-Vascular Endothelial Growth Factor Treatment of Neovascular Age-Related Macular Degeneration: The Comparison of Age-Related Macular Degeneration Treatments Trials. *Ophthalmology*. 2016;123(8):1751-1761.
4. Ho AC, Heier JS, Holekamp NM, Garfinkel RA, Ladd B, Awh CC, Singh RP, Sanborn GE, Jacobs JH, Elman MJ, Loewenstein A, Eichenbaum DA. Real-World Performance of a Self-Operated Home Monitoring System for Early Detection of Neovascular Age-Related Macular Degeneration. *Journal of Clinical Medicine*. 2021; 10(7):1355.
5. Chew EY, Clemons TE, Bressler SB, et al; AREDS2-HOME Study Research Group. Randomized trial of a home monitoring system for early detection of choroidal neovascularization home monitoring of the Eye (HOME) study. *Ophthalmology*. 2014;121(2):535-544.
6. Regillo CD, Brown DM, Abraham P, Yue H, Ianchulev T, Schneider S, Shams N. Randomized, double-masked, sham-controlled trial of ranibizumab for neovascular age-related macular degeneration: PIER Study year 1. *Am J Ophthalmol*. 2008 Feb;145(2):239-248.



# ForeseeHome At a Glance

- > The ForeseeHome AMD Monitoring Program is a **comprehensive remote monitoring service** for intermediate AMD patients
- > Partner with the Notal Vision Monitoring Center, digital health provider of ForeseeHome, to help **prevent AMD patient vision loss**
- > We provide end-to-end management and support for patients and practices, **at no cost to the practice**



**ForeseeHOME™**

AMD Monitoring Program

provided by Notal Vision  
Monitoring Center

**1-855-600-3112**

Mon-Fri, 8 AM to 6 PM EST

[www.foreseehome.com/doctor](http://www.foreseehome.com/doctor)

ForeseeHome is a registered trademark, and the ForeseeHome AMD Monitoring Program and logo and the Notal Vision logo are trademarks of Notal Vision. © 2022 Notal Vision, Inc. All rights reserved.